

# CLINICALLY SIGNIFICANT

# ANSWERS FROM

# bkFusion

# PROSTATE BIOPSIES



- Fast, guided workflow that keeps you in control and follows your familiar biopsy procedure
- Reduce procedure steps and minimize registration errors with Predictive Fusion®
- Outstanding imaging provides anatomical details for confident biopsies
- Extensive urology portfolio and 40 years of expertise in ultrasound for urology

# OUTSTANDING VISUAL GUIDANCE FOR EASY BIOPSY PROCEDURES

Fusing powerful real-time ultrasound images with pre-exam MRI data gives you better guidance to help accurately target lesions identified on the MRI images, potentially reducing the risk of missing high-grade tumors or under-staging tumors for active surveillance.

## bkFusion



### FAST AND INTUITIVE

bkFusion offers an easy and familiar workflow to make prostate biopsy procedures in either the free-hand transrectal or the transperineal approach as efficient as possible.



### MAINTAIN CONTROL

The urologist maintains control of the entire procedure and can freely adjust ultrasound gain and depth or choose to scan in different planes (transverse, sagittal and endfire) to better target areas of concern, without the need to resweep or recalibrate during procedures.



### UNMATCHED IMAGE QUALITY

Quickly identify lesions and perform targeted biopsies using images with high spatial, temporal, and contrast resolution.



### ONE INTEGRATED SYSTEM

Single-system footprint with simultaneous display of MRI and real-time ultrasound images on one monitor.

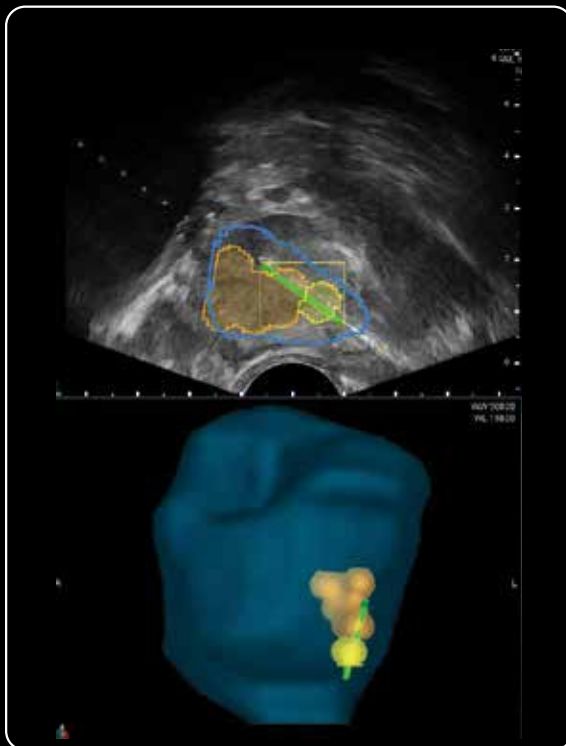
# REDUCE PROCEDURE STEPS AND MINIMIZE REGISTRATION ERRORS

## PREDICTIVE FUSION®

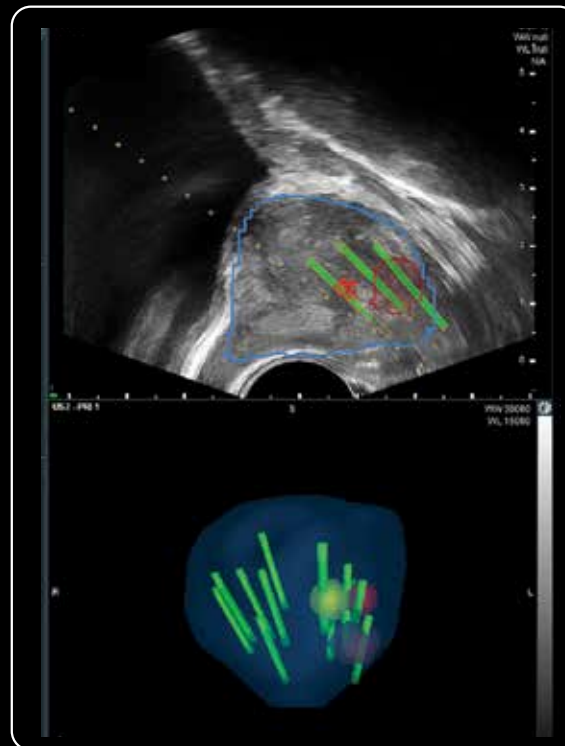
bkFusion features Predictive Fusion®<sup>1</sup>, a unique rigid registration workflow that reorients the supine MRI into left lateral decubitus (LLD) or dorsal lithotomy (DL) position before the patient is on the table.

Predictive Fusion® accelerates the registration process and increases MRI/Ultrasound fusion accuracy by eliminating contouring and segmentation on the ultrasound image. Predictive Fusion also allows the urologist to adjust the contours in real-time if they become distorted from transducer pressure on the prostate or from patient movement.

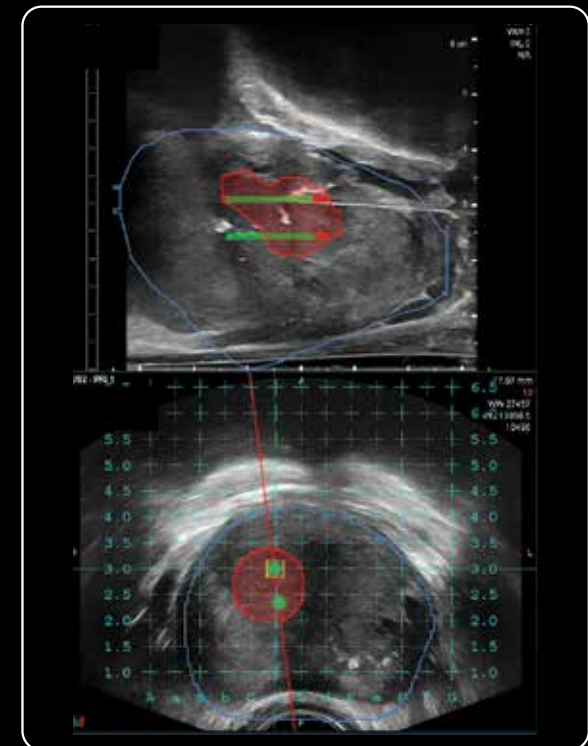
When the images are fused the urologist simply checks to confirm alignment and then proceeds with their familiar biopsy workflow, requiring minimal extra steps to do prostate biopsies with confidence and ease.



Targeted fusion prostate biopsy, transrectal



Targeted fusion prostate biopsy with some random sampling, transrectal

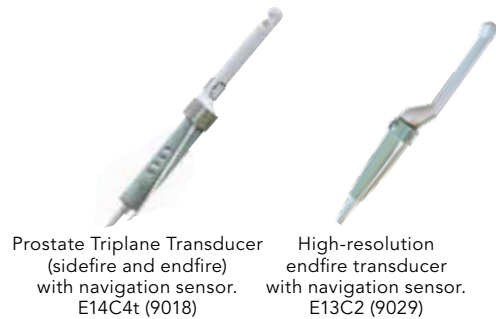


Targeted fusion prostate biopsy, transperineal

<sup>1</sup> Predictive Fusion® is a Registered Trademark by MIM Software Inc.

# AN INTEGRATED SOLUTION TAILORED TO UROLOGISTS

## Transrectal Biopsies



Prostate Triplane Transducer (sidefire and endfire) with navigation sensor. E14C4t (9018)

High-resolution endfire transducer with navigation sensor. E13C2 (9029)



EMT (electromagnetic tracking) generator is positioned near the patient

## bkFusion

is fully integrated on bk3000/ bk5000 premium ultrasound systems combining unmatched image quality with a streamlined and intuitive fusion workflow.

## Transperineal Biopsies



Prostate Transperineal Biopsy Transducer. E14CL4b (9048)



Interfaces with CIVCO EX3 stepper

No additional tracking equipment needed

FUSION FUNCTIONALITY POWERED BY:



BK Medical  
8 Centennial Drive  
Peabody  
MA 01960  
USA  
T +1 978 326 1300  
bkmedical.com

North America  
Sales & Service  
BK Medical  
8 Centennial Drive  
Peabody, MA 01960  
USA  
T +1 978 326 1300  
F +1 978 326 1399  
bkmedical.com

Europe and Rest of World  
Sales, Service & Design Center  
BK Medical  
Mileparken 34  
2730 Herlev  
Denmark  
T +45 4452 8100  
F +45 4452 8199  
bkmedical.com

