

REAL-TIME

INTRAOPERATIVE

bk5000 ROBOTIC-ASSISTED SURGERY

IMAGING

- Dedicated surgical ultrasound system with a simple workflow and small footprint
- Uniquely designed, patented, fully sterilizable Drop-In transducer for access to difficult-to-reach anatomy
- Immediate, auto-optimized imaging using the No-touch Autogain and Auto Focus features
- Seamless integration with Tile Pro™ multi input display

CLEAR, REAL-TIME VISUAL ULTRASOUND GUIDANCE FOR CONFIDENT ROBOTIC-ASSISTED PROCEDURES

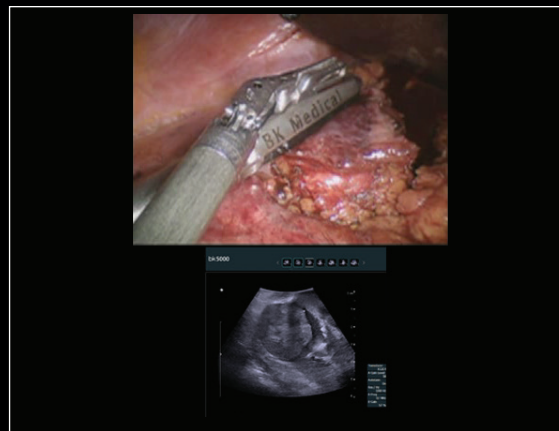
Ultrasound helps surgeons locate and visualize tumor margins, key arteries, and other anatomical structures quickly, in real-time, and with greater precision. The bk5000's excellent image quality, with high contrast and spatial resolution, allows you to clearly see the margins of lesions and helps you achieve the best outcome for your patients.

ROBOTIC-ASSISTED SURGERY



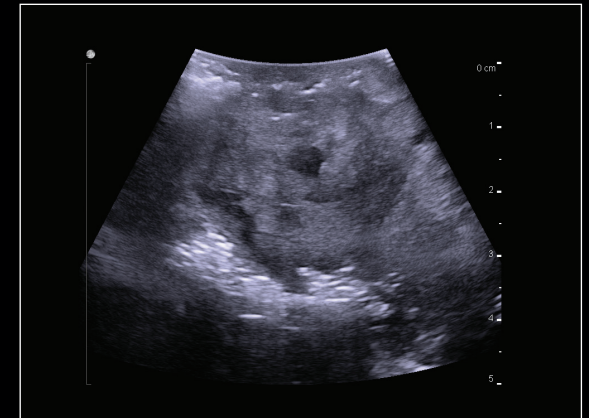
Fully sterilizable Drop-In transducer has a specially designed fin that is grasped by the robotic arm for maximum control and organ contact.

PARTIAL NEPHRECTOMY

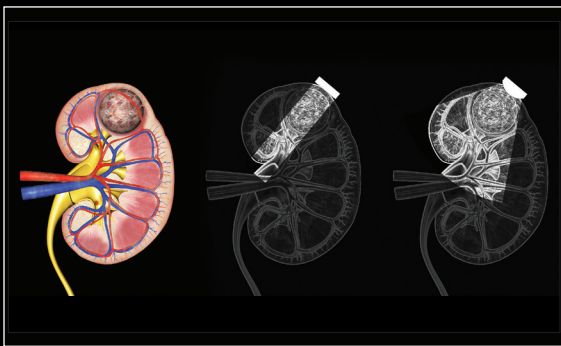


In kidney navigation and difficult-to-access endophytic and exophytic tumors, the compact Drop-In transducer enables a wide field of view for faster examinations.

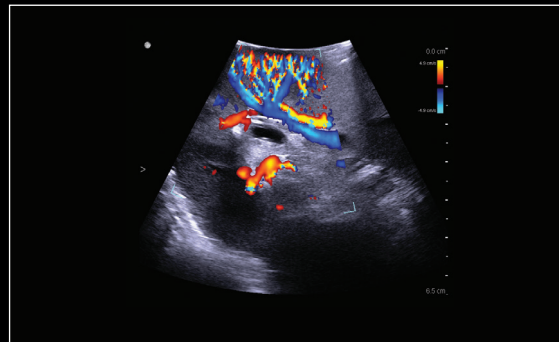
MYOMECTOMY



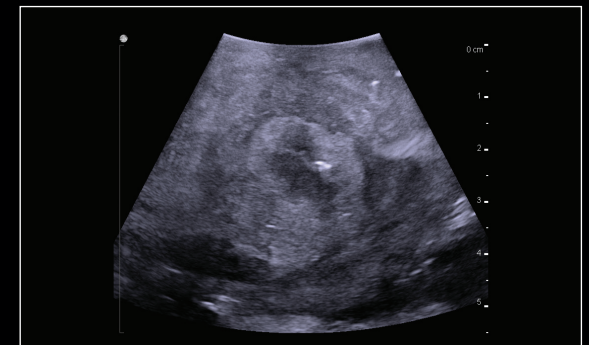
Real-time intraoperative ultrasound helps locate and identify small and submucosal fibroids.



The curved array provides a wide field of view for a better overview, enabling visualization of complex organs.

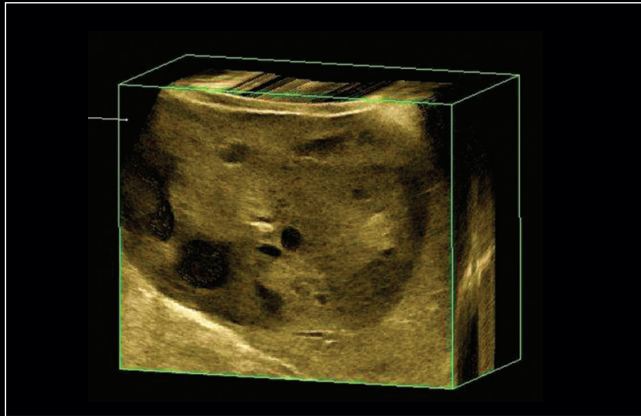


Sensitive color Doppler helps identify arterial and venous blood supply - this is especially important where selective clamping is needed.

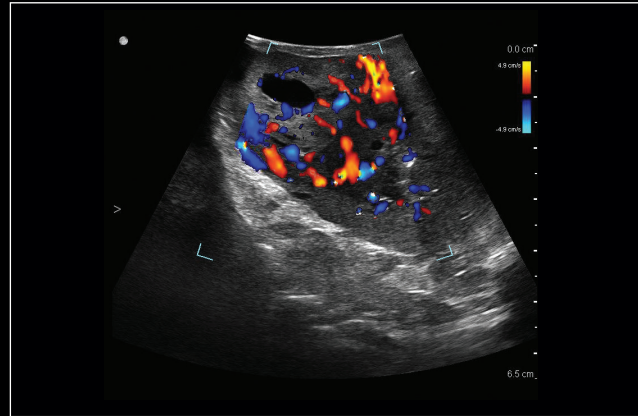


Real-time intraoperative ultrasound can help surgeons differentiate between myometrium, endometrium, and fibroids.

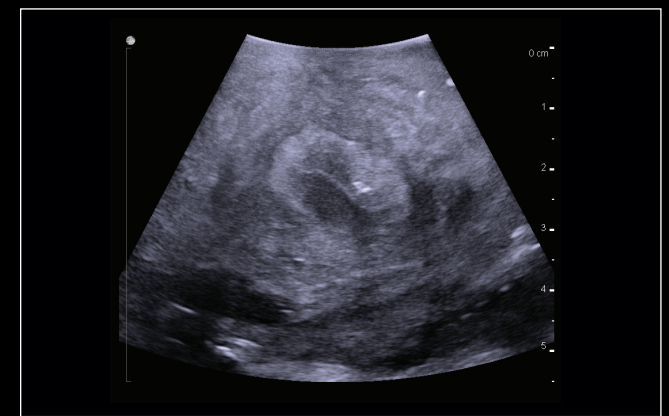
THE REAL-TIME INFORMATION YOU NEED TO MAKE CRITICAL DECISIONS DURING SURGICAL PROCEDURES



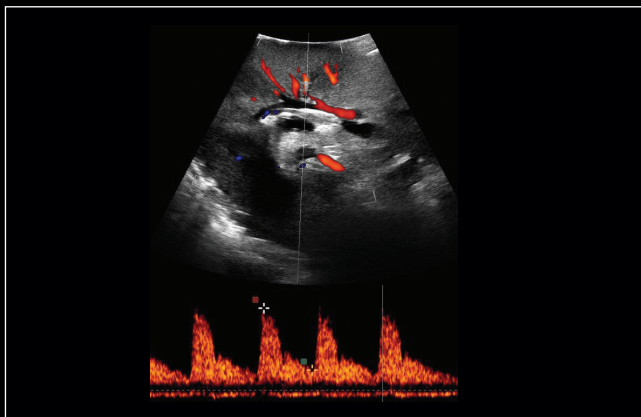
3D kidney tumor



Renal cell carcinoma with color Doppler



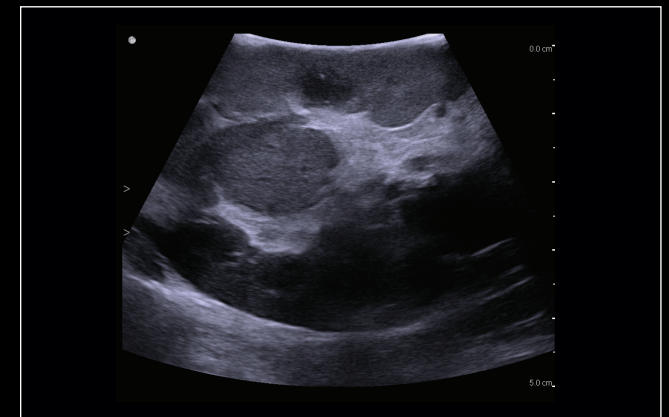
Normal appearing endometrium after myomectomy



Normal renal flow post partial nephrectomy



Small renal tumor



Centrally located renal mass

DEDICATED SURGICAL ULTRASOUND

DESIGNED FOR SURGERY - bk5000

- High-resolution, real-time images with outstanding anatomical details.
- Immediate, auto-optimized imaging using the No-touch Autogain and Auto Focus features - no adjustments needed.
- Easy plug-and-play DVI seamless integration of images with TilePro™ multi-input display*.
- Sterilizable remote control for convenient control of the system in the sterile field. Small system footprint - to fit in the OR.
- Rapid boot time and up to two hours of plug-free imaging.



FULLY STERILIZABLE, SPECIALIZED TRANSDUCERS DESIGNED FOR SURGERY

- Ergonomically designed for a secure and comfortable grip.
- Long transducer cables allow flexible movement in the OR.



*Trademark of Intuitive Surgical, Inc.

BK Medical
8 Centennial Drive
Peabody, MA 01960
USA
T +1 978 326 1300
bkmedical.com

USA
Sales & Service
BK Medical
8 Centennial Drive
Peabody, MA 01960
USA
T +1 978 326 1300
F +1 978 326 1399
bkmedical.com

Europe and Rest of World
Sales, Service & Design Center
BK Medical
Mileparken 34, 2730
Herlev, Denmark
T +45 4452 8100
F +45 4452 8199
bkmedical.com

bk medical